



The **ERNAKULAM DISTRICT Co-operative BANK Ltd.**

Head Office: P. B. NO. 4, P.O. KAKKANAD, KOCHI - 682 030

Website : www.edcbank.com Email : mail@edcbank.com

Phone : (PBX) 2424549, 2424613, 2424683, 2424684, 2424899, 3240216

Fax : 0484 - 2424584

AN ISO 9001 : 2008 CERTIFIED BANK

Tender for

**INTERIOR FURNISHING, ELECTRICAL, AIR CONDITION, DATA CABLING
AND PA SYSTEM WORKS FOR THE ERNAKULAM DISTRICT CO-OPERATIVE
BANK LTD. AT ALUVA EVENING BRANCH**

PRICE BID

SUMMARY		
INTERIOR FURNISHING, ELECTRICAL, AIRCONDITION, DATA CABLING & PAS SYSTEM WORKS FOR THE ERNAKULAM DISTRICT CO-OPERATIVE BANK LTD. EVENING BRANCH AT ALUVA		
SL.NO	DESCRIPTION	AMOUNT
1	INTERIOR FURNISHING - BRANCH	
2	ELECTRICAL WORKS - BRANCH	
3	DATA & PA SYSTEM WORKS	
4	AIRCONDITIONING WORKS- BRANCH	
5	MISCELLANEUS ITEMS	
6	INTERIOR FURNISHING - ATM	
7	ELECTRICAL WORKS - ATM	
8	AIRCONDITIONING WORKS- ATM	
	TOTAL	

BILL OF QUANTITIES					
INTERIOR FURNISHING WORKS FOR ERNAKULAM DISTRICT CO-OPERATIVE BANK BRANCH AT ALUVA					
SI.No	Description	Unit	Qty	Rate	Amount
1	Fully Glazed Partitions				
	Supplying & fixing Fully Glazed Partitions for manager cabin. The partitions are made of 12mm thick glass edges polished for a height of 240cm from floor. The glasses are inserted in to the wooden frame work at top and bottom. Partition is made of beech wood, 30cm X 5cm at top & 15cm X5cm at bottom finished with melamine polish matt finish. The partition are to be firmly fixed to the ceiling. Measurement for partition will be up to false ceiling from floor level.. Etching sticker should be provided as per the drawing	SQ.M	36.00		
2	Fully Glazed Door				
	Providing and fixing fully glazed doors for entrance and manager cabin. The door is made of 12mm thick glass . The frame work with beach wood frame 10x5cm & 15x5cm at top and bottom respectively finished with melamine polish matt finish. Necessary floor springs, 1 pair of SS D handle 400mm length and 250mm dia to each shutter, lock of approved make etc. to be fixed to the door. The edges of the glass to be polished. Etching sticker should be provided as per the drawing	SQ.M	5.00		
3	Semi glazed solid partition for Manager Cabin				
	Supplying & fixing Semi glazed solid partition for Manager Cabin for a height of 240cm/ False ceiling height. For a height of 90cm from FFL and from 210 cm height to false ceiling level, the inner side frame work is of country wood 5cm x 3.5cm with verticals and horizontals 60cm c/c , which is covered with 6mm thick marine grade plywood (IS 303) on both sides and finished with 1mm thick lamination. From 90cm height to 210cm, 10mm thick plain glass is to be inserted in grooves made on ply wood partition. Skirting for a height of 10cm with 12mm thick beechwood planks finished is to be provided. The exposed edges of partition where doors are fixed should be sealed with beechwood 7.5cm X 1.2cm thick. The partition is to be firmly fixed to the floor and ceiling. Beech wood beading polished and grooves with melamine matt is to be provided as shown in the drawing. Measurement for partition will be FFL to false ceiling Level	SQ.M	5.50		
4	Double Skin Solid Partition				
	The partitions are of double skin type for a height of 240cm/ False ceiling height. The inner side frame work are of country wood 5cm x 3.5cm with verticals and horizontals 60cm c/c , which is covered with 6mm thick marine grade plywood (IS 303) on both sides and finished with 1mm thick lamination. Skirting for a height of 10cm with 12mm thick beechwood planks finished is to be provided. The exposed edges of partition where doors are fixed should be sealed with beechwood 7.5cm X 1.2cm thick. The partition is to be firmly fixed to the floor and ceiling. Beech wood beading polished and grooves with melamine matt is to be provided as shown in the drawing. Measurement for partition will be up to false ceiling from floor level.	SQ.M	33.50		
5	Half partition (counter)				

SI.No	Description	Unit	Qty	Rate	Amount
	Supplying and fixing half partition for counters. The total length of the partition is 165cm. The bottom portion of the partition is of double skin type for a height of 75cms, the inner side frame work are of country wood 5cm x 2.5cm with verticals and horizontals 60cm c/c , which is covered with 6mm thick marine grade plywood (IS 303) on both sides and finished with 1mm thick lamination. Partition above 75cm is firmly fixed with 12mm thick glass of size 105 cm X 45cm and balance portion finished with pinup board using velvet fabric over 6mm plywood both side over a frame of size 3.5 x2.5cm. All edges lipped with beech wood polished with melamine matt finish. The height of partition above table top is 45cm. The partition is firmly fixed to the floor. The edges of the glass to be polished. All visible wood surface to be edge polished, etc., complete	SQ.M	6.50		
6	Solid flush doors				
	Supplying and fixing single leaf 32mm thick solid core flush door shutters. Shutters finished with 1mm laminate on both sides. Providing 8mm thick plain glass vision panel size 20 x 45cm . Rates including providing necessary fittings such as door closers, bearing hinges, door stopper, 6 lever mortise lock with handles SS finish, tower bolts, etc., . complete	SQ.M	8.00		
7	Semi glazed door for Manager Cabin				
	Supplying and fixing semi glazed door for manager cabin. single leaf 40mm thick solid core flush door shutters up to 90cm level from FFL . Shutters finished with 1mm laminate on both sides. Providing 8mm thick plain glass vision panel size 20 x 45cm . Rates including providing necessary fittings such as door closers, bearing hinges, door stopper, 6 lever mortise lock with handles SS finish, tower bolts, etc., . complete	SQ.M	8.00		
8	Cash Cabin Partition				
	Supplying and fixing partition for Cash cabin. The partitions are made of 12mm thick glass to be fixed firmly to the beech wood frame of size 5x3.5cm polished with melamine matt finish as shown in the drawing for a height of 135cm above the solid partition. The bottom portion of the partition is of double skin type for a height of 75cms. A box of size 45x45 cm made of 19mm plywood finished with laminate is provided in front of the table. In the frame work verticals and horizontals are made of country wood 5cmx 2.5 cm to a max. distance of 60cm and two verticals at edges with 5x2.5 cm beech wood. Frame work is covered with 6mm thick marine grade plywood (IS 303) on both sides and finished with 1.0mm thick laminate of approved make. The partition is firmly fixed to the floor. Necessary doors are to be provided as shown in the drawing. Necessary handles, hinges, tower bolts, multi lock-godrej and hydraulic door closer etc. are to be provided for the door. Beech wood polished beadings/grooves in laminate etc. to be provided as shown in the drawing. Skirting for a height of 10cm with 12mm thick planks of teak wood finished with melamine matt polish to be provided. All free edges of the glass to be polished. A slit of size 30x10cm to be provided for cash transaction. A pigeon hole also to be	Nos	1.00		
9	Plywood Covering for Rolling Shutter				
	Plywood Covering for Rolling Shutter: The frame work is made of 5x2.5cm country wood vertically at 60cm center to center and horizontally and 6mm thick marine plywood fixed to the frame work to cover the rolling shutter. The whole unit is finished with 1mm thick laminate . Necessary hinges ball catches be provided to open for repairing the rolling shutter.	SQ.M	28.50		
	TABLES & SIDE TABLES				
10	Manager's Table with drawer unit.	No	1.00		

SI.No	Description	Unit	Qty	Rate	Amount
	The size of Table is 180 x 75 x 75cm. The table top made of 25mm thick MDF with 0.8mm thick laminated finish (hot pressed) and edges finished matching colour edge band tape 2mm thick. Front and other sides made of 18mm marine grade (IS 303)plywood with 1mm laminated finish for outside. The inner sides are painted with 2 coats of enamel paint over a coat of wood primer. keyboard tray has to be provided as shown in the drawing are to be made of 12mm thick marine plywood (IS 303). Foot rest of 7.5cmx 3cm with country wood has to be provided. Provision for cable manager is to be provided. A drawer unit made of 19mm plywood (IS 303) .All exposed portions are 1mm thick laminated finish (hot pressed) .Inside portions are painted finish. Providing two drawers and one shutters on bottom sliders and necessary fittings such as locks, handle and castor wheels etc. complete .				
11	Manager's Side Table	No	1.00		
	The size of Side Table is 120 x45x75cm. The table top made of 25mm thick prelaminated MDF with 1mm thick laminated finish (hot pressed) and edges finished matching colour edge band tape 2mm thick. Front and other sides made of 19mm plywood with 1mm laminated finish for outside. The inner sides are painted with 2 coats of enamel paint over a coat of wood primer. Door are made of 12mm thick plywood with outside laminated finish & inside painted finish , sliding on aluminum channels. One number horizontal rack should be provided with 19mm thick plywood. All exposed edges should be lipped				
12	Asst. Manager's Table	No	1.00		
	The size of Table is 150x 75 x 75cm. The table top made of 25mm thick MDF with 0.8 mm thick laminated finish (hot pressed) and edges finished matching colour edge band tape 2mm thick. The inner sides are painted with 2 coats of enamel paint over a coat of wood primer. 12mm thick plywood is used for Key board tray on telescopic sliders. A country wood foot rest of size 7.5x2.5cm is also provided. Provision for cable manager is to be provided. Drawers are made of 19mm thick plywood and 1mm thick laminate should be provided on exposed faces. Necessary fittings such as steel slides, godrej lock , handles etc. of approved make are to be provided.				
13	Asst.Manager's Side Table	No	1.00		
	The size of Side Table is 90x45x75cm.The table top made of 25mm thick MDF with 0.8mm thick laminated finish (hot pressed) and edges finished matching colour edge band tape 2mm thick. Front and other sides made of 19mm plywood with 1mm laminated finish for outside. The inner sides are painted with 2 coats of enamel paint over a coat of wood primer. Door are made of 12mm thick plywood with outside laminated finish & inside painted finish , sliding on aluminum channels. One number horizontal rack should be provided with 19mm thick plywood. All exposed edges should be lipped				
14	Counter Table with side table				

SI.No	Description	Unit	Qty	Rate	Amount
	The size of Table is 130x75x75cm & side table 90x45x75cm. The table top made of 25mm thick MDF with 0.8mm thick laminated finish (hot pressed) and edges finished matching colour edge band tape 2mm thick. Front and other sides made of 19mm plywood with 1mm laminated finish for outside. The inner sides are painted with 2 coats of enamel paint over a coat of wood primer. 12mm thick plywood is used for Key board tray. A country wood foot rest of size 7.5x2.5cm is also provided. Provision for cable manager is to be provided. for side table . Necessary fittings such as slides, godrej lock , handles etc. of approved make are to be provided. Doors are made of 12mm thick plywood with outside laminated finish & inside painted finish , sliding on aluminum channels. One number horizontal rack should be provided with 19mm thick plywood. All exposed edges should be lipped	Nos	5.00		
15	Cash Counter Table	Nos	1.00		
	Providing cash counters 150x90x110, table top 90 cm width , ledger top 30cm width and 35cm height from table top , front apron and transaction top vertical sides of drawer boxes made of 18mm plywood with 1mm lamination finish. Ledger top The table top made of 25mm thick prelaminated MDF with 1mm thick laminated finish (hot pressed) and edges finished matching colour edge band tape 2mm thick . Three drawers, CPU stand, key board tray, wire manager, drawer with 19mm thick marine grade plywood(IS303). All exposed faces should be finished with 1mm thick laminate and inside surfaces should be finished with enamel paint etc. complete				
16	Cash Counter Side Table	No	1.00		
	The size of Side Table is 120x45x75cm. The table top made of 19mm thick marine plywood (IS303) with 1mm thick laminated finish (hot pressing) and matching colour edge band tap hot pressing. Front and other sides made of 19mm plywood with 1mm laminated finish for outside. The inner sides are painted with 2 coats of enamel paint over a coat of wood primer. Doors are made of 12mm thick plywood with outside laminated finish & inside painted finish , sliding on aluminum channels. One number horizontal rack should be provided with 19mm thick plywood. All exposed edges should be lipped				
17	Peon Table & Locker Room Table				
	The size of Side Table is 100x45x75cm. The table top made of 19mm thick marine plywood (IS303) with 1mm thick laminated finish (hot pressing) and matching colour edge band tap hot pressing. Front and other sides made of 19mm plywood with 1mm laminated finish for outside. The inner sides are painted with 2 coats of enamel paint over a coat of wood primer. Providing one drawers with necessary fittings such as lock, handle , sliders etc. complete. .	No	1.00		
18	Wicket Gate				
	Supplying & fixing wicket gate made with country wood frame of size 5cmx3cm around and intermediates at 60cm/c and it is covered with 6mm thick plywood on both sides and finished with 1mm thick laminate. Necessary Teak / Beech wood beadings and grooves in laminate. Providing necessary hinges , tower bolt etc. complete.	No	1.00		
19	Writing Ledge				

Sl.No	Description	Unit	Qty	Rate	Amount
	Providing and fixing writing ledge size about 60cm long and 30 to 45cm width to shape at about 105cm from for level comprising of 18mm ply boxing on both sides of 120cm height and finished with 1mm thick laminate of approved colour and shade. 12mm clear float glass with edge polished at top bottom and verticals to be fixed on ply boxing with necessary SS "D" bracket.	No	1.00		
20	Storage				
	The width of the cupboard is 45cm as shown in the drawing. All other horizontal and vertical partitions are made of 19mm thick marine plywood (IS 303). The front partition of the cupboard is to be provided with Openable shutters 19mm thick on auto closing hinges, all visible areas finished with 1mm thick laminated finished all edges lipped, inside painted with 2 coats of enamel paint over a coat of wood primer as shown in the drawing. Multipurpose locks, 10 cm SS handles etc. should be provided.	SQ.M	15.00		
21	Plain gypsum ceiling				
	Providing and fixing suspended false ceiling, which includes providing and fixing G I Wall angle of size 0.4mm thick having flanges of 25mm each along with the perimeter of ceiling screw fixed to the brick wall / partition with the help of nylon sleeves and screws at 610 mm centers. Then suspending G I Load bearing runners of size 18mm, 0.80mm thick with two flanges of 30mm with slots of 20mm outer and 16mm inner gap from the soffit at 1220mm centers, with 8mm G I rods fixed to the soffit with expansion fasteners @ 600mm c/c. Ceiling section of thickness 0.45mm having knurled web of 51.50 mm and knurled two flanges of 16mm each with inward lips of size 5mm each then fixed to the load bearing runners by inserting into the slots, perpendicular to the load bearing runners at 610mm centers. 12.5 mm tapered edge India gypsum is then screw fixed to the ceiling section with 25mm drywall screw at 230 mm c/c. Screw fixing is done mechanically either with screwdriver or drilling machine with suitable attachment. Finally the boards are to be jointed and finished so as to have a flush look which includes filling and finishing the tapered and square edges of the boards with jointing compound, and paper tape. Rates to be inclusive of finishing including 2 coats of emulsion over putty base. (Refer ceiling drawing)	SQ.M	54.00		
22	Fine Line Gypsum Ceiling (Grid size 60cmx60cm)				
	Providing false ceiling, frame work with 24 / 15mm wide white powder coated galvanized iron 'T' sections at 60 cms center to center both ways, infill panels made of 0.6mm aluminium tile hanged on to the ceiling using 0.4mm GI wires with necessary bolts, anchor bolts etc.,. complete	SQ.M	5.50		
23	Gypsum Cove				
	Supplying & fixing Coves in gypsum board with GI framing. Coves to be 10cm wide and 20cm ht. Front facia to be 10cm wide in Gypsum board	RM	10.00		
24	Column Paneling				
	The frame work of column paneling should be of country wood 2.5cmx2.5cm both horizontally and vertically at 60cm c/c. 6mm thick marine plywood (IS 303) with 1mm thick laminate up to a height of 90cm, balance column should be finished with texture finish small bubbles and 2 coat acrylic emulsion above it., 2 nos 12mm thick plywood 10cm wide band to be fixed on the perimeter and below ceiling level with laminate finish. All visible edges should be lipped Teak / Beech wood polished beadings. Skirting for a height of 10cm with 12mm thick teak wood planks with melamine matt finished should be provided.	SQ.M	10.00		
25	Supplying & fixing planter box made of 19 mm marine plywood (IS 303) finished with 1mm lamination of approved colour & design including Artificial plant of 35 cm height .with prior approval from the Bank/Architects.	No	1.00		

SI.No	Description	Unit	Qty	Rate	Amount
26	Providing and fixing vertical Blinds of approved make and approved Colour.	SQ.M	34.00		
27	Providing and fixing in position collapsible MS gate with vertical channel 20 x 10 x 2mm braced with flat iron diagonals 20 x 5mm size with top & bottom rails of iron 40 x 40 x 6mm with 38mm dia steel pulleys complete with bolts & nuts, locking arrangement, stoppers, handles. Painting 2 coats of synthetic enamel paint over 2 coats of zinc chromate primer.	SQ.M	9.00		
28	Supplying & fixing aluminum step ladder for locker room	No	1.00		
29	Supplying & fixing in position NOTICE BOARD 90cm x 60cm using 19mm thick WHITE BOARD in Aluminium Sections all as per design, detailed drawings etc., complete	Nos	1.00		
30	Supplying & fixing complaint box of size 30cmX 45cm X 20cm using 12mm thick plywood with all exposed portions 1mm thick laminate finish & inside painted with 2 coats of enamel paint over a coat of wood primer as shown in the drawing.	No	1.00		
31	Supplying & fixing Bank logo with Lettering for entrance door, Logo for Manager partition, Name stickers for each divisions as per the design and approval by Bank	LS	1.00		
32	Painting				
a)	Painting with plastic emulsion paint two coat to inside walls over 2 coats of putty and 1 coat cement primer for walls and ceiling	SQ.M	130.00		
b)	Painting with enamel paint two coat to grills, rolling shutter, etc. complete	SQ.M	70.00		
TOTAL-INTERIOR					

BILL OF QUANTITIES					
ELECTRICAL WORKS FOR ERNAKULAM DISTRICT CO-OPERATIVE BANK BRANCH AT ALUVA					
Sl.No	Description	Unit	Qty	Rate	Amount
1	MCB DBs				-
a	Supply and erection of single phase 12way UPS DB consisting of 40A 2P ELCB+MCB as incomer and 6-16A SP MCB 12Nos as outgoing	Nos	1.00		
b	Supply and erection of 3phase 8way vertical double door MCB DB consisting 63A 4P ELCB+MCB as incomer and 2nos 32A TPMCB and 6-32A SP MCB-18 nos as outgoing	Nos	1.00		
c	Supply and erection of 3phase 4 way phase selector MCB DB consisting of 40A 4P 30mA ELCB+ MCB as incomer and 6-16A SP MCB-12 nos as outgoing	Nos	1.00		
d	Supply and erection of 40A 2P changeover with enclosure for UPS	nos	1.00		
3	WIRING				
a	Supply and laying of 3runs of 2.5 sq.mm copper wire in 20mm PVC conduit as circuitmains ,including fixing of 3nos 6A socket with 16A switch for UPS power	nos	8.00		
b	Supply and laying of 3runs of 2.5 sq.mm copper wire in 20mm PVC conduit as circuitmains ,including fixing of 2nos 6A socket with 16A switch for UPS power	nos	8.00		
c	Supply and laying of 2 runs of 4sq.mm wire along with 1run of 2.5 sq.mm wire through 20mm PVC conduit including fixing of 32ADP switch with 25A socket for 1 & 2 TR AC	Nos	3.00		
d	Supplying & laying of 3runs of 4 sq.mm wire along with 2runs of 2.5 sq.mm wire through 25mm PVC conduit including fixing of 32A 4pole isolator for 3TR AC	Nos	1.00		
e	Supply and laying of 3 runs of 6sq.mm wire through 20mm PVC conduit for UPS input	LS	1.00		
f	Supply and erection of 6A socket with 6A switch including wiring by using 3 runs of 1.5 sq.mm wire through 20mm PVC conduit	Nos	5.00		
g	Supply and erection of 16A socket with 16A switch including wiring with 3 runs of 2.5 sq.mm wire through 20mm PVC conduit	Nos	2.00		
h	Supply and fixing of 32A 2PMCB change over with enclosure for UPS out put including wiring of 3 runs of 6Sqmm wire	nos	1.00		
i	Supply and laying of 3 runs of 4 sq.mm wire through 20mm conduit for inverter input and output	LS	1.00		
4	LIGHT FIXTURES				
a	Supply and erection of 36 W LED 2'X2' mirror optic luminaire including wiring by using 3 runs of 1.5 sq.mm wire through 20mm pvc conduitsd as secondary and 3 runs 2.5 sq.mm wire as primary circuits	Nos	4.00		
b	Supply and erection of 12W LED down lighter including wiring by using 3 runs of 1.5 sq.mm wire through 20mm pvc conduitsd as secondary and 3 runs 2.5 sq.mm wire as primary circuits	Nos	13.00		
c	Supply and erection of 1x28w T5 patty fixtures including wiring by using 3 runs of 1.5 sq.mm wire through 20mm pvc conduitsd as secondary and 3 runs 2.5 sq.mm wire as primary circuits	Nos	7.00		
d	Supply and erection of 1x14w T5 (2ft) patty fixtures including wiring by using 3 runs of 1.5 sq.mm wire through 20mm pvc conduitsd as secondary and 3 runs 2.5 sq.mm wire as primary circuits	Nos	2.00		
e	Supply and Fixing 1200mm ceiling fan including down rod fan hook,step type fan regulator and wiringb by using 3 runs of 1.5 SQmm wire including fixing of 6A socket	nos	1.00		
f	Supply and Fixing wall fan including wiring same as light points	nos	10.00		
g	Supply and Fixing of 230mm exhaust fan including wiring same as light points	nos	2.00		

Sl.No	Description	Unit	Qty	Rate	Amount
h	Supplying & fixing of Calling bell including wiring by using 3 runs of 1.5 sq.mm wire through 20mm PVC conduit	nos	1.00		
5	CABLING & EARTHING				
a	Supply and laying of 4x25sq.mm PVC A PVC cable through wall from Metering cubicle to MDB including termination	LS	1.00		
b	Supply and laying of 4x10sq.mm PVC A PVC cable through wall fromMDB to lighting DB	LS	1.00		
c	Supply and providing 40mm dia 2.5m long GI pipe electrode, inter connection of earth pit and earthing of DBs by using 10swg copper asperin IS3043 1987 including all civil works	LS	2.00		
d	Supply and providing 600x600x3mm copper plate includingr IS3043 1987 including earthing of UPS by using 6sq.mm wire	LS	1.00		
	Total				

BILL OF QUANTITIES					
DATA & PAS WORKS FOR ERNAKULAM DISTRICT CO-OPERATIVE BANK BRANCH AT ALUVA					
Sl.No	Description	Unit	Qty	Rate	Amount
1	DATA&VOICE				-
a	Supply and laying of 2pair telephone cable through 25mm PVC conduit.for data and voice including fixing of RJ11 socket with face plate	nos	9.00		
b	Supply and erection of 10 pair crone box with crone connectors	Nos	1.00		
c	Supply and laying of CAT-6 LAN cable through 25mm PVC conduit.for including fixing of RJ45 socket jack plate etc.	nos	9.00		
d	Supply and fixing of 1nos R45 jack	Nos	9.00		
e	Supply and fixng of 6U rack wth all accessories	Nos	1.00		
f	Supply and fixing of 24port patch panel wth all accessors including connection	Nos	1.00		
g	Supply and fixing of 10/100/1000mbps gigabite switch in the rack	Nos	1.00		
h	Supply and providing 1m patchchord	Nos	9.00		
i	Supply and providing 2m patchchord	Nos	9.00		
2	PA SYSTEM				
a	Supplly and laying of 2runs of 1sqmm wire through 20mm PVC conduit for speakers pointa including fixing of Ahuja make 4 nos ceiling speakers	LS	1.00		
b	Supply and fixing of Ahuja make 50w amplifier with USB port	Nos	1.00		
	Total				

BILL OF QUANTITIES					
MISCELLANEUS ITEMS FOR ERNAKULAM DISTRICT CO-OPERATIVE BANK BRANCH AT ALUVA					
Sl.No	Description	Unit	Qty	Rate	Amount
1	Dining Table				-
	Supplying & fixing Dining Table with top made of 18mm thick marine grade plywood (IS 303) with top 1mm laminate finish & bottom finished with 1coat primer and 1coat enamel, then Table legs are made of 100mm Dia B- Class MS Pipe 4 numbers with a rectangular frame work of 35mm X 35mm X 5mm MS angle. All Mild Steel sections are 2coat enamel paint over 1coat primer as per drawing.				-
	120cm X 80cm	Nos	1.00		
2	Sofa Three Seater				
	Supplying and fixing fabric or synthetic leather upholstery or approved equivalent - Three seater as per drawing.	No	1.00		
3	Teapoy				
	Teapoy should of size 60 x45 cm with 12mm glass at top with machine cut polished edges. Legs are made from 5cmx5cm square Teak / Beech wood 12mm thick glass with etching pattern is fixed in between the above said legs as per drawing enclosed. These legs are connected with 3.5cmx3.5cm horizontal teak/beech wood reapers. The height of the Teapoy is 50cm. A grid work of average distance of 5cm c/c using 2cmx2cm W.C reapers are provided below the glass.	No	1.00		
4	Supplying water colour painting size : 120cm X 90cm or equivalent	Nos	2.00		
5	Supplying & fixing mirror of size 60cm X 90cm	No	1.00		
6	Supplying & fixing powder coated airport chairs (3 seats)	No	1.00		
7	Supplying & fixing dining PVC chairs - Neelkamal or Supreme	Nos	5.00		
8	Supplying & fixing aluminum step ladder for locker room	No	1.00		
9	Supplying & installation of 1500VA inverter with maintenance free battery and 2 hours backup	Nos	1.00		
TOTAL - MISCELLANEUS ITEMS					

BILL OF QUANTITIES					
AIRCONDITIONING WORKS FOR ERNAKULAM DISTRICT CO-OPERATIVE BANK BRANCH ,Aluva					
Sl.No	Description	Unit	Qty	Rate	Amount
1	Manager Cabin				
	Supply installation testing & Commissioning of CARRIER / BLUESTAR make 1TR Split AC - 3 Star rated with 4 RMT Copper Pipe , 4 RMT PVC Drain pipe, 4KVA V guard make Stabilizer and ordinary stand.	NOS	1.00		
2	Banking Hall				
	Supply installation testing & Commissioning of CARRIER / BLUESTAR make 2 TR Split AC - 3 Star rated with 7 RMT Copper Pipe ,7 RMT PVC Drain pipe 5KVA V guard make Stabilizer and Fabricated stand.	NOS	2.00		
	GRAND TOTAL				

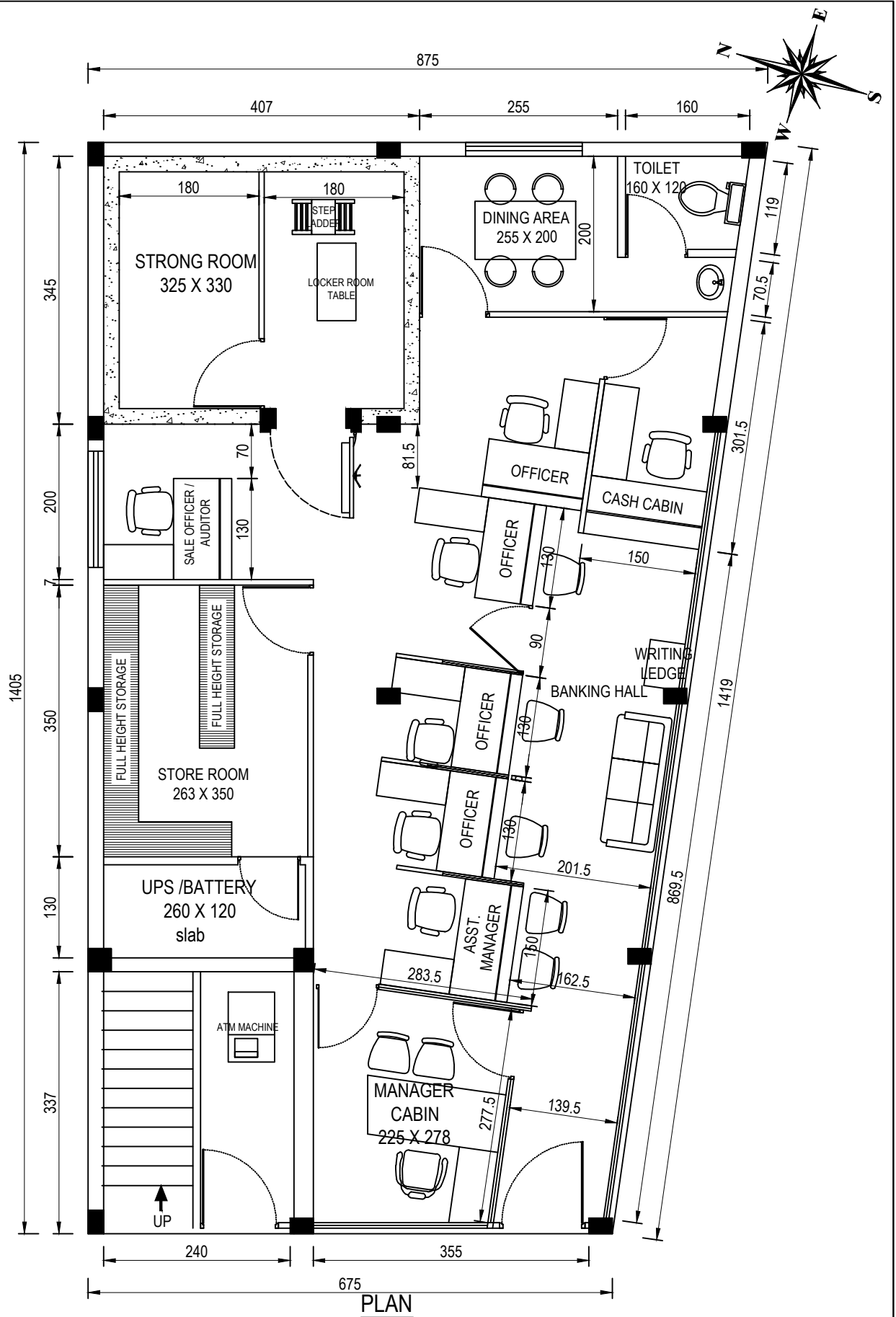
BILL OF QUANTITIES					
INTERIOR FURNISHING WORKS FOR ERNAKULAM DISTRICT CO-OPERATIVE BANK ATM AT ALUVA					
Sl.No	Description	Unit	Qty	Rate	Amount
1	Fully Glazed Door with partition(front glazing)				-
	Providing and fixing fully glazed doors for ATM entrance. The door is made of 12mm thick glass . The frame work with beach wood frame 10x5cm & 15x5cm at top and bottom respectively finished with melamine polish matt finish. Necessary floor springs, 1 pair of SS D handle 400mm length and 250mm dia to each shutter, lock of approved make etc. to be fixed to the door. The edges of the glass to be polished. Etching sticker should be provided as per the drawing	SQ.M	3.00		
2	Double Skin Solid Partition				
	The partitions are of double skin type for a height of 240cm/ False ceiling height. The inner side frame work are of country wood 5cm x 3.5cm with verticals and horizontals 60cm c/c , which is covered with 6mm thick marine grade plywood (IS 303) on both sides and finished with 1mm thick lamination. Skirting for a height of 10cm with 12mm thick beechwood planks finished is to be provided. The exposed edges of partition where doors are fixed should be sealed with beechwood 7.5cm X 1.2cm thick. The partition is to be firmly fixed to the floor and ceiling. Beech wood beading polished and grooves with melamine matt is to be provided as shown in the drawing. Measurement for partition will be up to false ceiling from floor level.	SQ.M	8.00		
3	Solid flush doors				
	Supplying and fixing single leaf 32mm thick solid core flush door shutters. Shutters finished with 1mm laminate on both sides. Providing 8mm thick plain glass vision panel size 20 x 45cm . Rates including providing necessary fittings such as door closers, bearing hinges, door stopper, 6 lever mortise lock with handles SS finish, tower bolts, etc., . complete	SQ.M	2.00		
4	Plywood Covering for Rolling Shutter				
	Plywood Covering for Rolling Shutter: The frame work is made of 5x2.5cm country wood vertically at 60cm center to center and horizontally and 6mm thick marine plywood fixed to the frame work to cover the rolling shutter. The whole unit is finished with 1mm thick laminate . Necessary hinges ball catches be provided to open for repairing the rolling shutter.	SQ.M	1.50		
5	Writing Ledge				
	Providing and fixing writing ledge size about 60cm long and 30 to 45cm width to shape at about 105cm from for level comprising of 18mm ply boxing on both sides of 120cm height and finished with 1mm thick laminate of approved colour and shade. 12mm clear float glass with edge polished at top bottom and verticals to be fixed on ply boxing with necessary SS "D"bracket.	No	2.00		
6	Providing false ceiling, frame work with 24 / 15mm wide white powder coated galvanized iron 'T' sections at 60 cms center to center both ways, infill panels made of 0.6mm aluminium tile hanged on to the ceiling using 0.4mm GI wires with necessary bolts, anchor bolts etc.,. complete	SQ.M	6.00		
7	Painting with plastic emulsion paint two coat to inside walls over 2 coats of putty and 1 coat cement primer for walls and ceiling	SQ.M	35.00		
TOTAL-INTERIOR					

BILL OF QUANTITIES					
ELECTRICAL WORKS FOR ERNAKULAM DISTRICT CO-OPERATIVE BANK ATM AT ALUVA					
Sl.No	Description	Unit	Qty	Rate	Amount
1	Supply and erection of 1ph 8way MCB DB consists of 40A 2P 100mA ELCB+MCB as incomer and 6-32A SP MCB - 6nos as outgoing including 2x10 sqmm cable with 2 runs of 10 swg copper from Bank DB	Nos	1.00		
2	Supply and laying of 3runs 4 sqmm wire through 20mm PVC conduit including fixing of 20A 2pole MCB with enclosure	Nos	1.00		
3	Supply and fixing of 1no 16A socket with 16A Switch including wiring by using 3 runs of 2.5 sq.mm wire	Nos	2.00		
4	Supply and fixing of 1no 6A socket with 6A Switch including wiring by using 3 runs of 1.5 sq.mm wire.	Nos	1.00		
5	Supply and fixing of 1X36W patty fixtures including wiring by using 3 runs of 1 sq.mm wire.	Nos	3.00		
6	Supply and fixing of 1X12W LED downlighters including wiring by using 3 runs of 1 sq.mm wire	Nos	2.00		
7	Supply and laying of 10sqmm cable through 20mm PVC conduit for ATM earthing by using 600x 600x3mm copper plate including all civil works	Ls	1.00		
8	Supply and fixing of 24hr timer for ATM board light including wiring by using 3runs of 2.5sq.mm wirw through 20mm PVC conduit for board light	Nos	2.00		
9	Supply and erection of single phase 8way DB consisting 25A 2P MCB change over as incomer and 4 nos SPMCB as outgoing including 2x 10 Sq.mm Al cable and 1 run of 10 swg copper	Nos	1.00		
GRAND TOTAL					

BILL OF QUANTITIES					
AIRCONDITIONING WORKS FOR ERNAKULAM DISTRICT CO-OPERATIVE BANK ATM AT ALUVA					
Sl.No	Description	Unit	Qty	Rate	Amount
1	ATM				
	Supply installation testing & Commissioning of CARRIER/ BLUESTAR make 1.0TR Split AC - 3 Star rated with 4 RMT Copper Pipe , 4 RMT PVC Drain pipe, 3KVA Everest make Stabilizer and ordinary stand.	NOS	2.00		
2	Supplying & installation digital variable timer SCHOTTKY make	NOS	1.00		
GRAND TOTAL					

LIST OF APPROVED MATERIALS (INTERIOR) (all material should be approved by the Bank/consultant)		
Sl.No	Material	Make
1	Hardwood	Cheruteak, Chadachi etc.,
2	Plywood	IS 303 - Anchor, Greenply, Archid, Century
3	Laminate	Merino, Greenlam, New Mika- 1mm
4	Glass	Saint Gobian, Asahifloat etc.,
5	Fixtures & Hinges	Ebco or equivalent
6	Door Closure, Floor Spring	Godrej, Everite, Dorset
7	Paint & Primers	Asian, Berger, ICI
8	Locks	Godrej, Ebco
9	Sliding fittings	Godrej, Ebco
10	Adhesive	Fevicol
11	Wood for Lipping etc.,	Beechwood first quality
12	False ceiling	India Gypsum, Laferage
13	Vertical Blinds	NL or Parytex

<u>LIST OF APPROVED MATERIALS (ELECTRICAL)</u> <u>(all material should be approved by the Bank/consultant)</u>		
<u>SL.NO</u>	<u>ITEM</u>	<u>MAKE</u>
1	SWITCHES, SOCKETS	MK WRAP ROUND ,LEGRAND
2	DB,MCB	LEGRAND,SCHNEIDER,HAGER
3	LIGHT FIXTURES	PHILIPS, WIPRO
4	CEILING SPEAKERS	AHUJA
5	AMPLIFIER	AHUJA
6	WIRES	FINOLEX. RR
7	CABLES	NICCO . FINOLEX. GLOSTER
8	NETWORK RACK	VALRACK
9	PATCH PANEL	DLINK
10	NETWORK SWITCH	DLINK
11	FAN	CROPMTON
12	EXHAUST FAN	ALMONARD

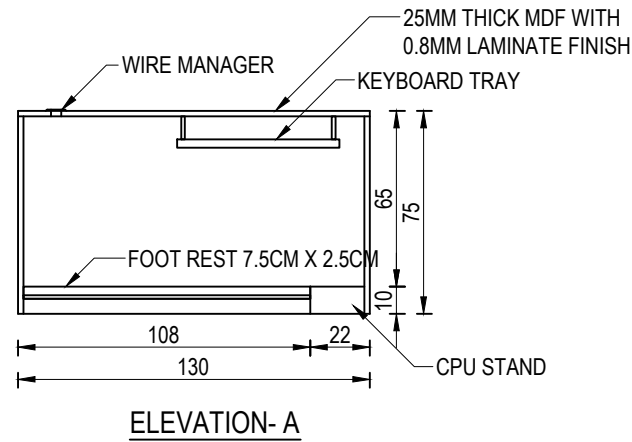
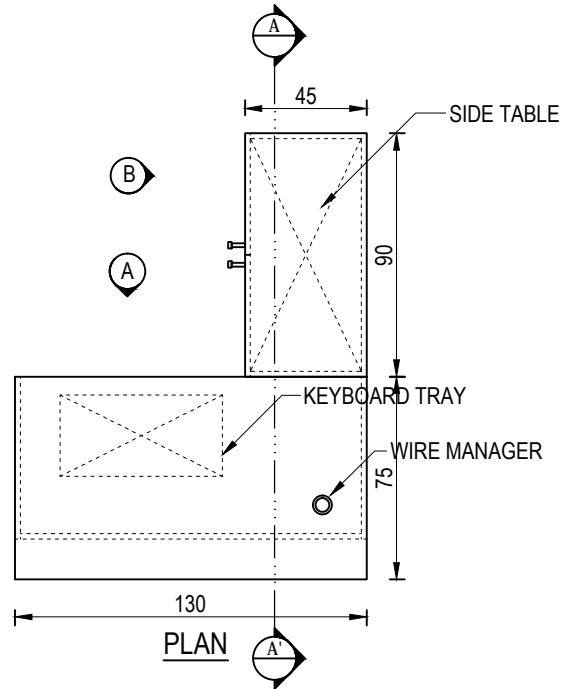
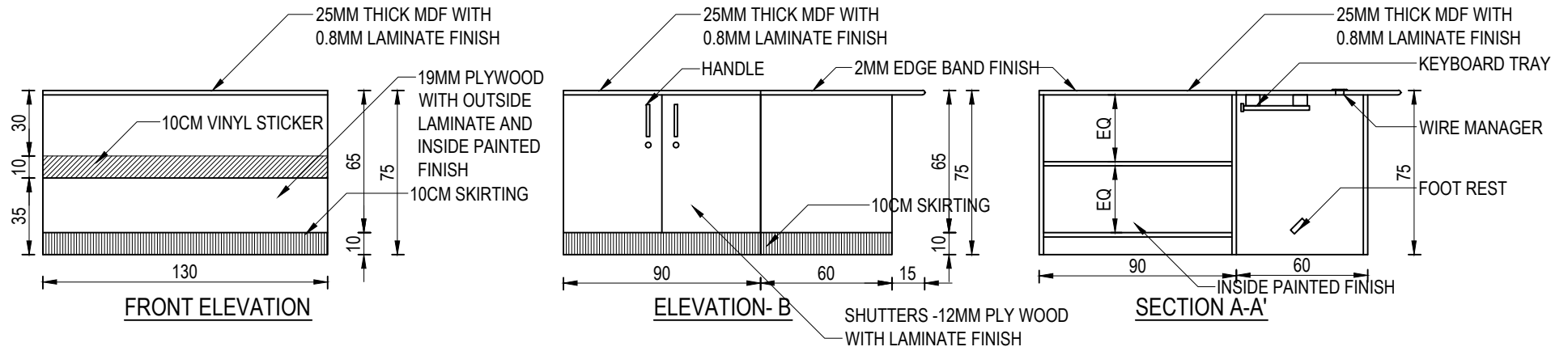


PLAN

AREA: 1145 SQ.FT

CEILING HEIGHT: 305cm, BEAM BOTTOM: 285cm

PROJECT:	ERNAKULAM DISTRICT CO-OPERATIVE BANK BRANCH AT ALUVA	INTERIOR LAYOUT		REV.	DRAWING NO.	REV. DATE	
				00	EDCB/ALV/14-15/01		
CONSULTANT:	ENGINEERING SERVICE CO-OPERATIVE SOCIETY, LTD., E-858, THEVARA	UNIT :	CM (UNLESS IF SPECIFIED)	SCALE :	NTS	DRAWN BY: SANTHOSH	DATE : 22/06/2015



**ERNAKULAM DISTRICT CO-OPERATIVE
BANK EVENING BRANCH AT ALUVA**

COUNTER TABLE & SIDE TABLE

DRAWN BY : SANTHOSH

DATE : 29/01/2015

UNIT : CM (UNLESS IF SPECIFIED)

SCALE : NTS

CONSULTANT:

ENGINEERING SERVICE CO-OPERATIVE
SOCIETY, LTD., E-858, THEVARA

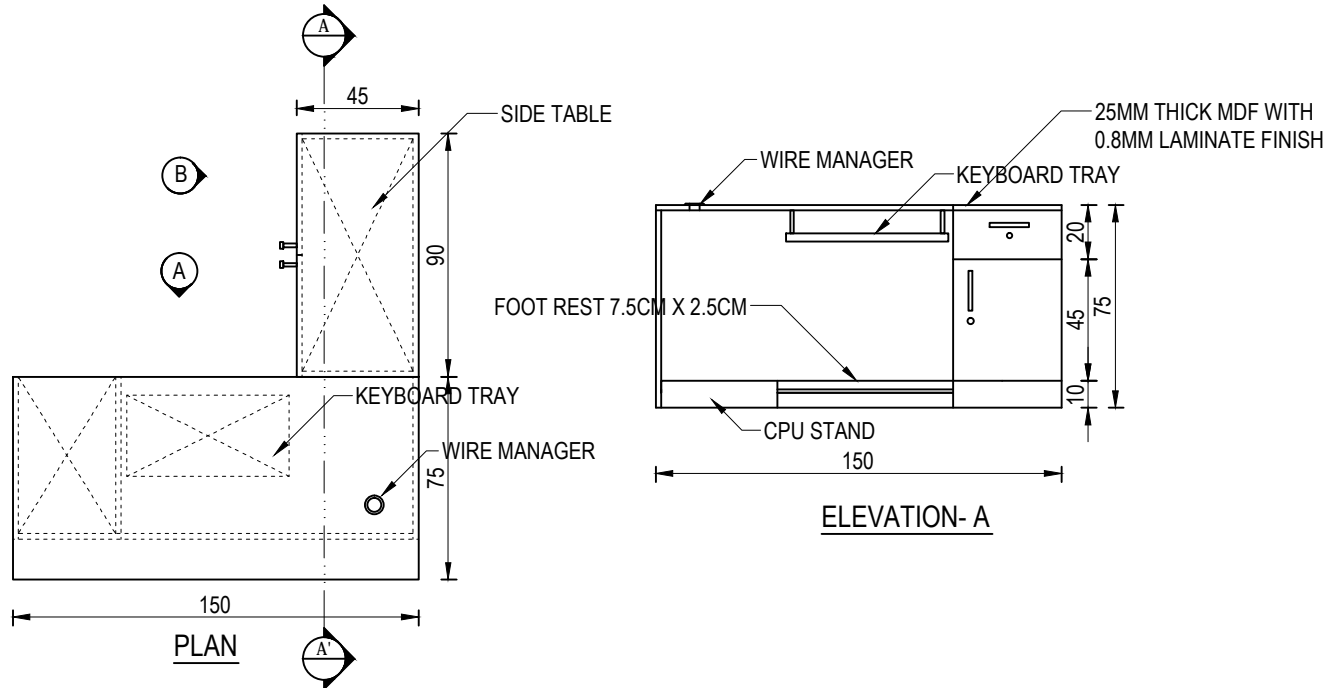
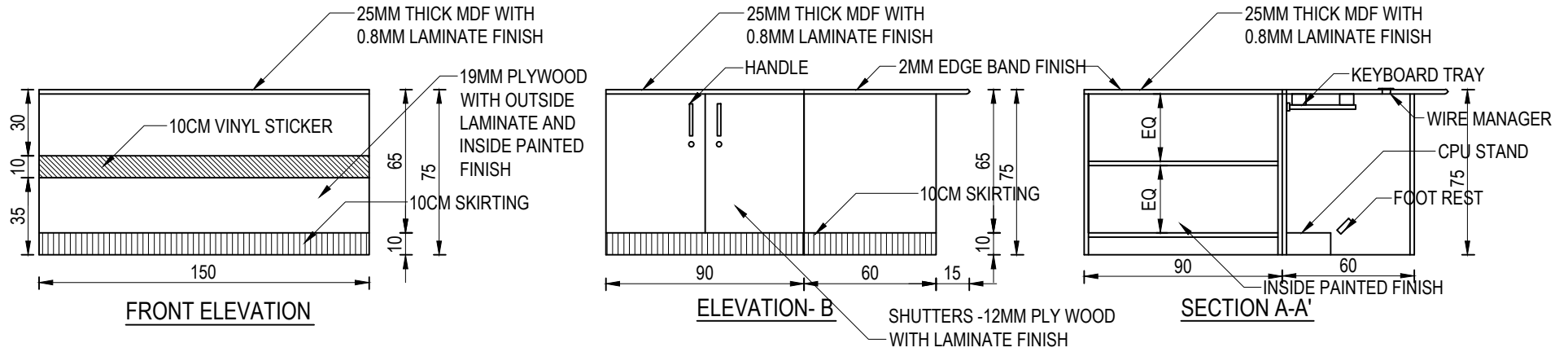
REV.

00

DRAWING NO.

EDCB/ALV/14-15/02

REV. DATE



ERNAKULAM DISTRICT CO-OPERATIVE
BANK EVENING BRANCH AT ALUVA

ASST. MANAGER TABLE & SIDE TABLE

DRAWN BY : SANTHOSH

DATE : 29/01/2015

UNIT : CM (UNLESS IF SPECIFIED)

SCALE : NTS

CONSULTANT:

ENGINEERING SERVICE CO-OPERATIVE
SOCIETY, LTD., E-858, THEVARA

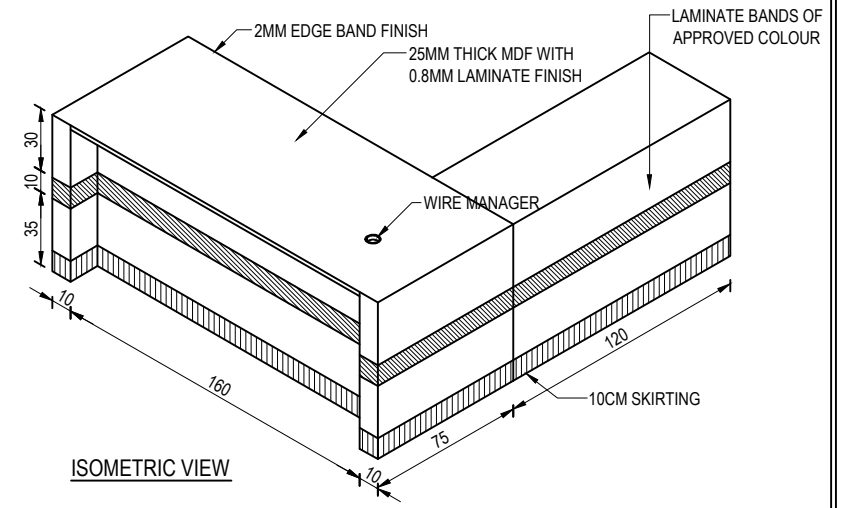
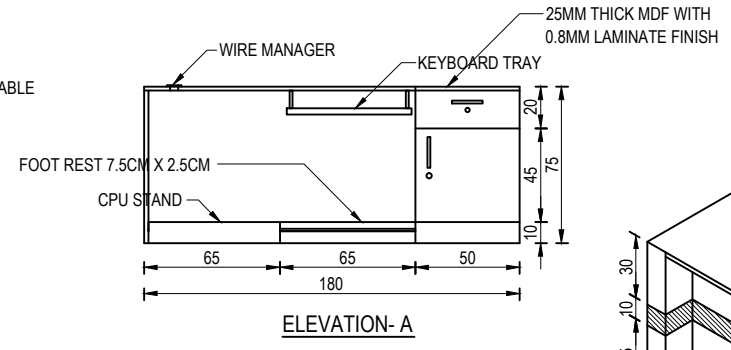
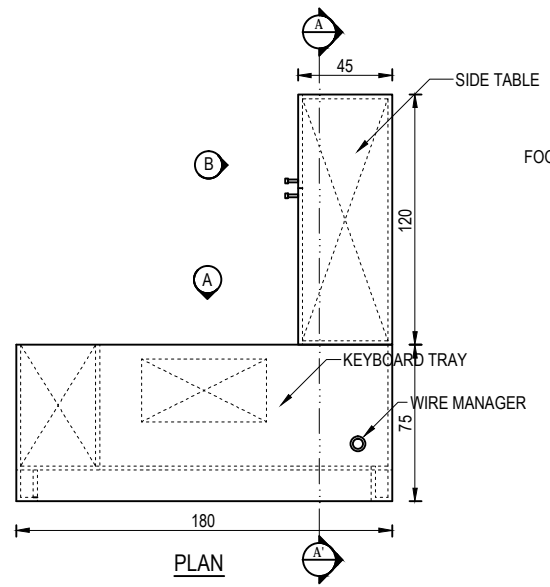
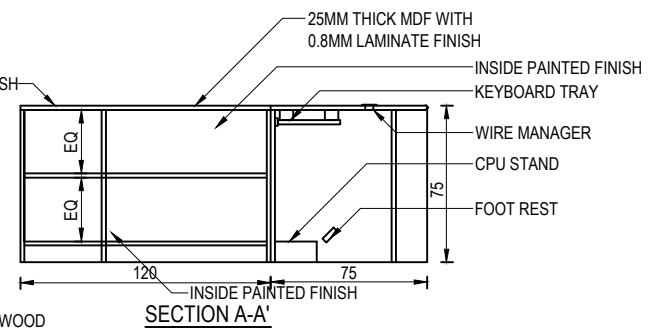
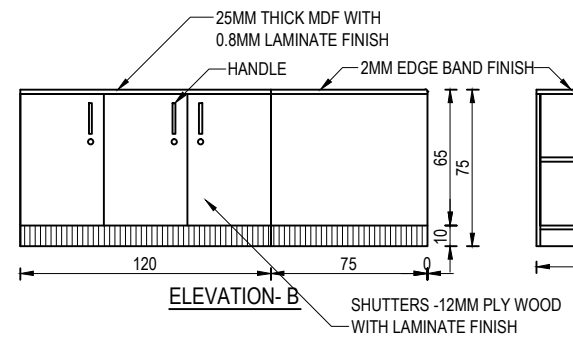
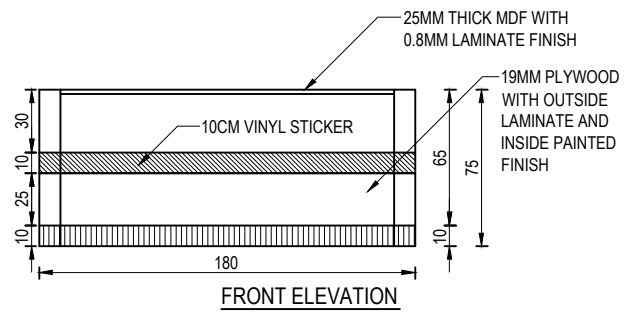
REV.

00

DRAWING NO.

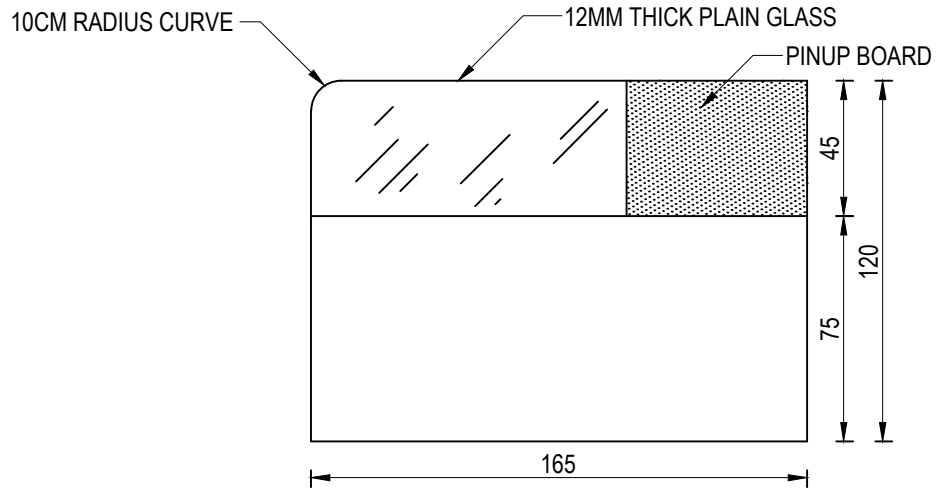
EDCB/ALV/14-15/03

REV. DATE

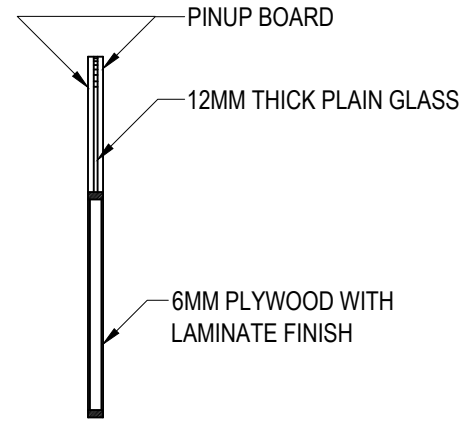


**ERNAKULAM DISTRICT CO-OPERATIVE
BANK EVENING BRANCH AT ALUVA**

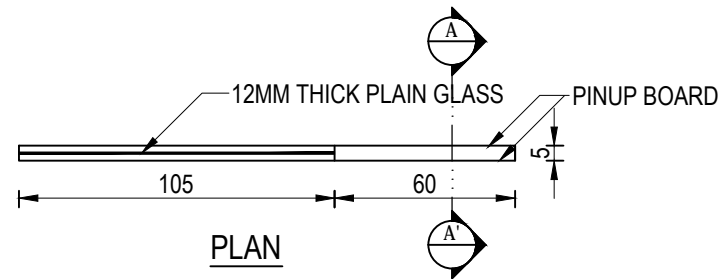
MANAGER TABLE & SIDE TABLE	UNIT : CM (UNLESS IF SPECIFIED)	REV.	DRAWING NO.	REV. DATE
	SCALE : NTS	00	EDCB/ALV/14-15/04	
	CONSULTANT: ENGINEERING SERVICE CO-OPERATIVE SOCIETY, LTD., E-858, THEVARA			
DRAWN BY : SANTHOSH				
DATE : 29/01/2015				



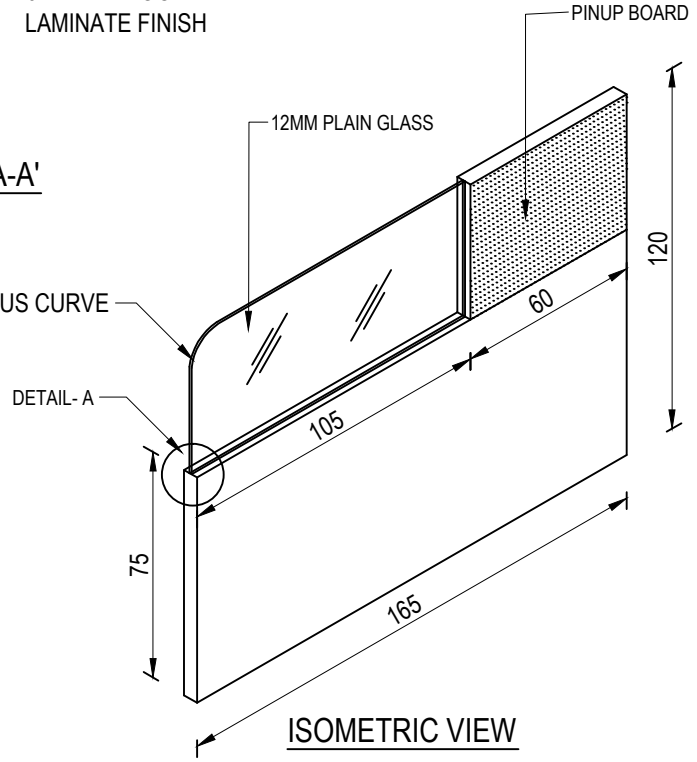
ELEVATION



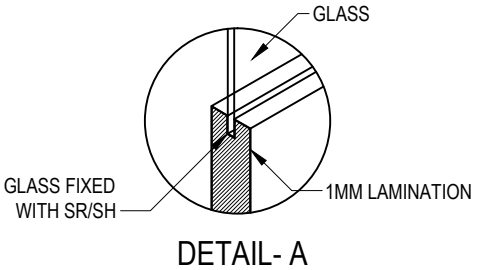
SECTION A-A'



PLAN



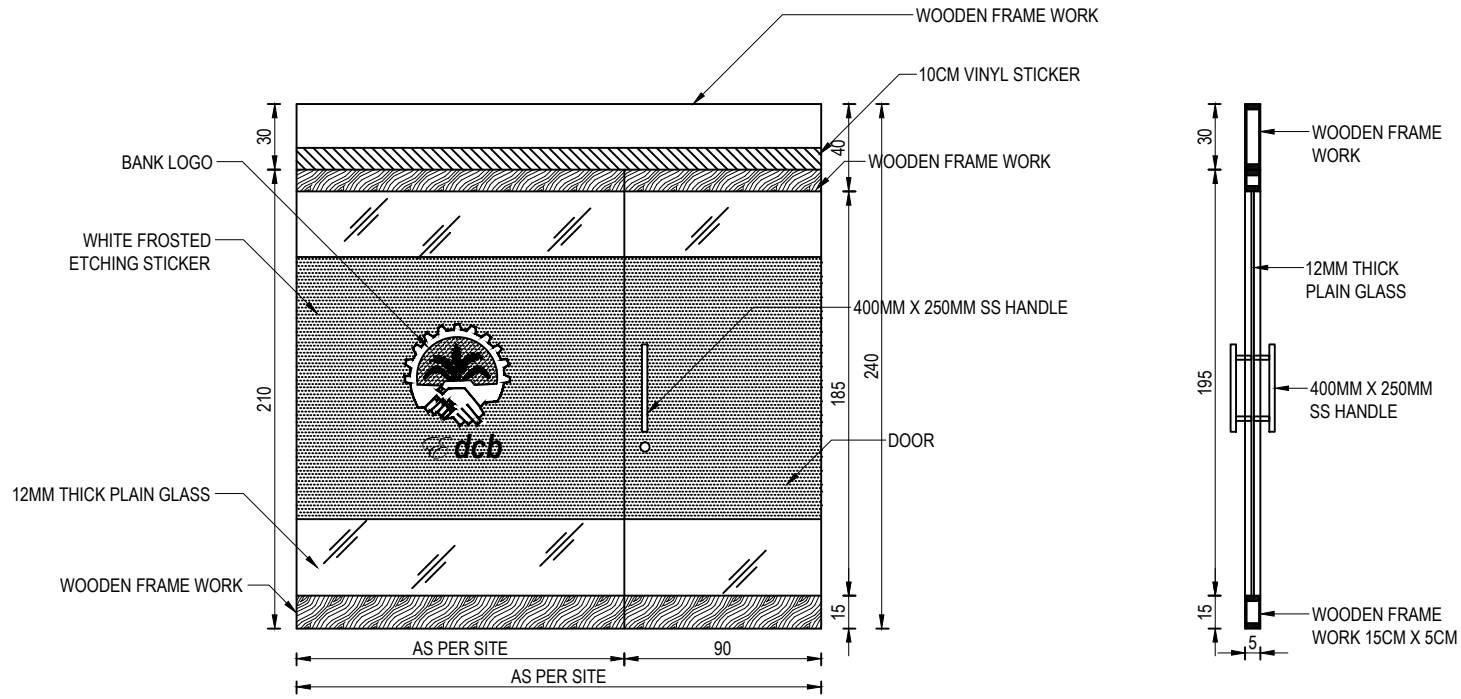
ISOMETRIC VIEW



DETAIL- A

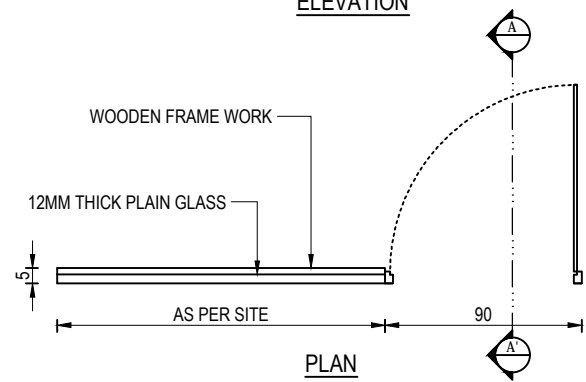
ERNAKULAM DISTRICT CO-OPERATIVE BANK
EVENING BRANCH AT ALUVA

ASST. MANAGER TABLE & SIDE TABLE	UNIT : CM (UNLESS IF SPECIFIED)	REV.	DRAWING NO.	REV. DATE
	SCALE : NTS	00	EDCB/ALV/14-15/05	
	CONSULTANT: ENGINEERING SERVICE CO-OPERATIVE SOCIETY, LTD., E-858, THEVARA			
DRAWN BY : SANTHOSH				
DATE : 29/01/2015				



ELEVATION

SECTION A-A'



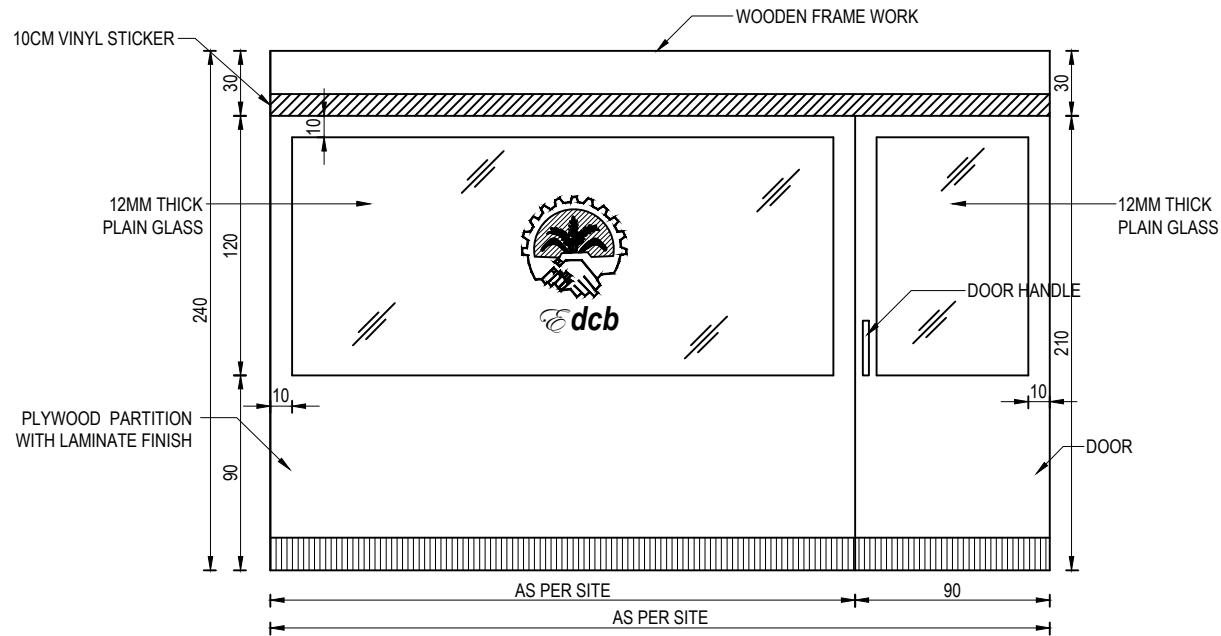
PLAN

**ERNAKULAM DISTRICT CO-OPERATIVE
BANK EVENING BRANCH AT ALUVA**

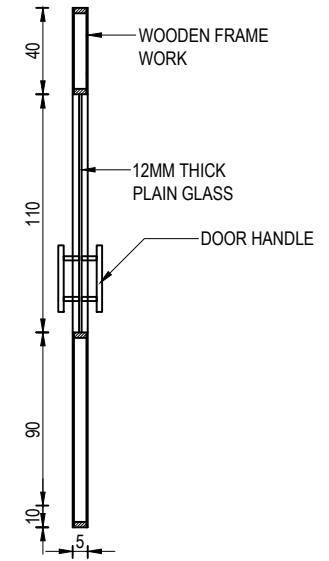
MANAGER GLAZED PARTITION WITH
DOOR
DRAWN BY : SANTHOSH
DATE : 29/01/2015

UNIT : CM (UNLESS IF SPECIFIED)
SCALE : NTS
CONSULTANT:
ENGINEERING SERVICE CO-OPERATIVE
SOCIETY, LTD., E-858, THEVARA

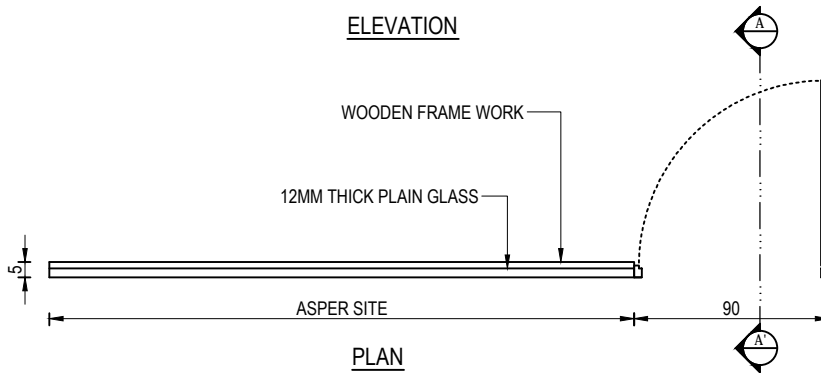
REV.	DRAWING NO.	REV. DATE
00	EDCB/ALV/14-15/06	



ELEVATION



SECTION A-A'



PLAN

ERNAKULAM DISTRICT CO-OPERATIVE
BANK EVENING BRANCH AT ALUVA

MANAGER SEMI GLAZED PARTITION
WITH DOOR

DRAWN BY : SANTHOSH

DATE : 29/01/2015

UNIT : CM (UNLESS IF SPECIFIED)

SCALE : NTS

CONSULTANT:

ENGINEERING SERVICE CO-OPERATIVE
SOCIETY, LTD., E-858, THEVARA

REV.

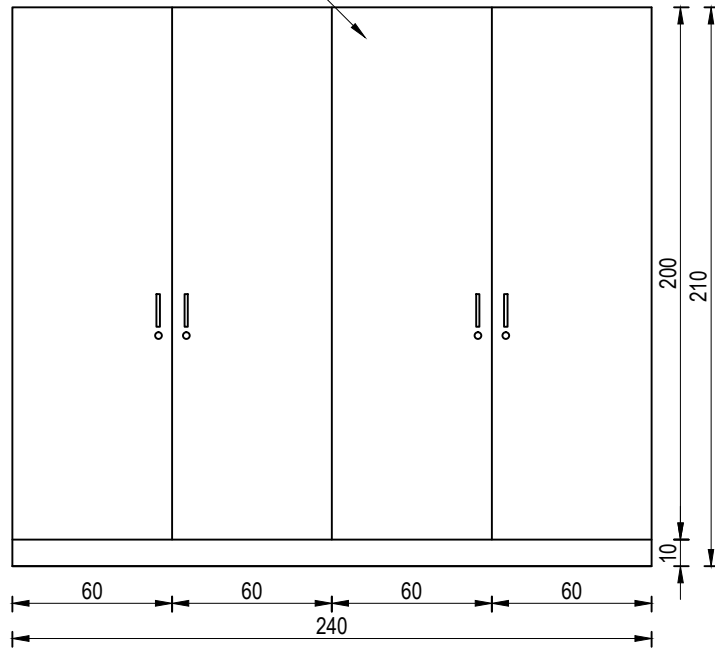
00

DRAWING NO.

EDCB/ALV/14-15/07

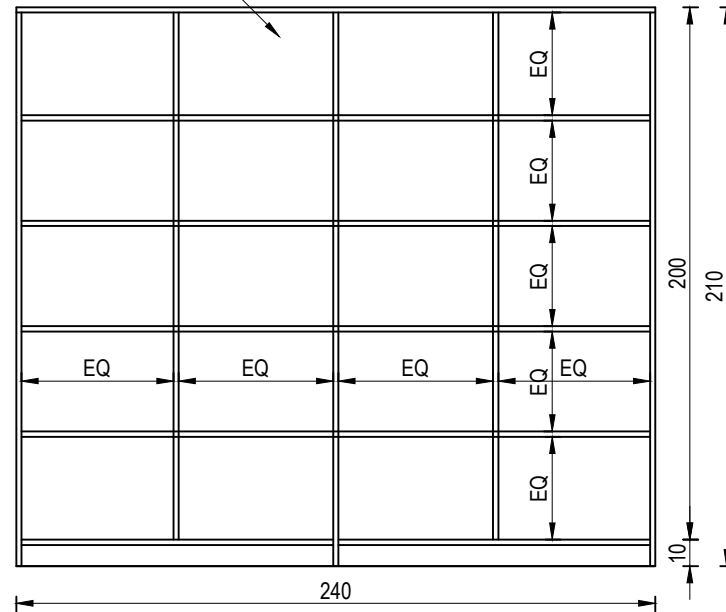
REV. DATE

19MM THICK MARINE PLYWOOD
WITH 1MM THICK LAMINATE FINISH

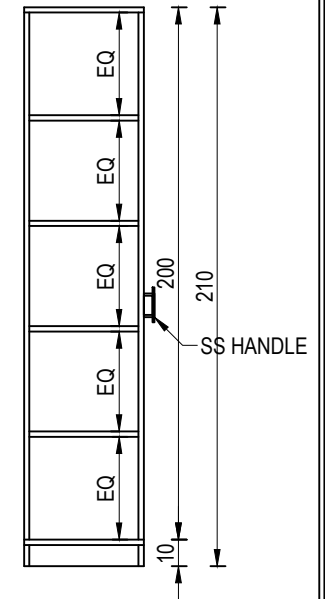


ELEVATION

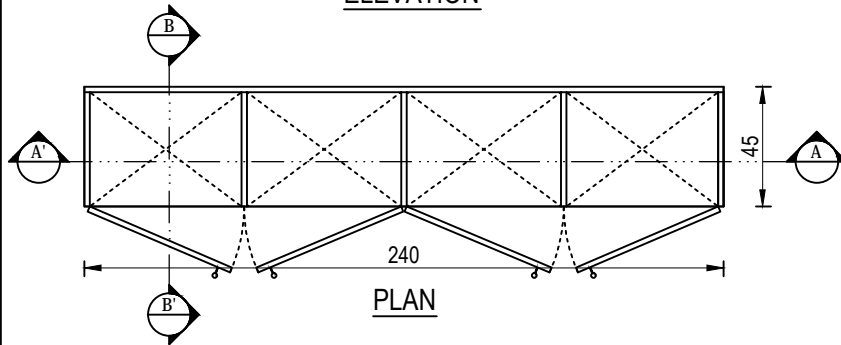
INSIDE PAINTED FINISH



SECTIONAL ELEVATION A-A'



SECTION B-B'



PLAN

ERNAKULAM DISTRICT CO-OPERATIVE BANK
EVENING BRANCH AT ALUVA

TYPICAL FULL HEIGHT STORAGE

DRAWN BY : SANTHOSH

DATE : 29/01/2015

UNIT : CM (UNLESS IF SPECIFIED)

SCALE : NTS

CONSULTANT:

ENGINEERING SERVICE CO-OPERATIVE
SOCIETY, LTD., E-858, THEVARA

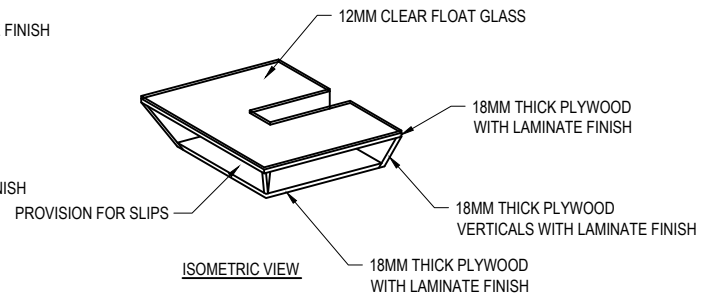
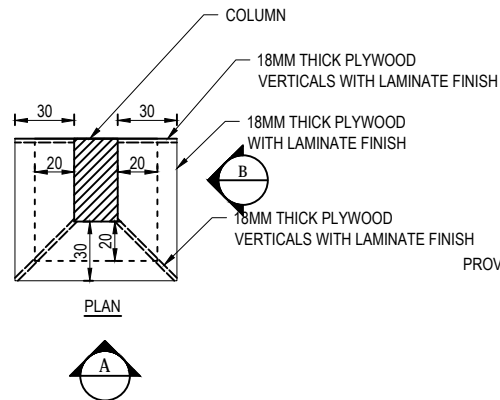
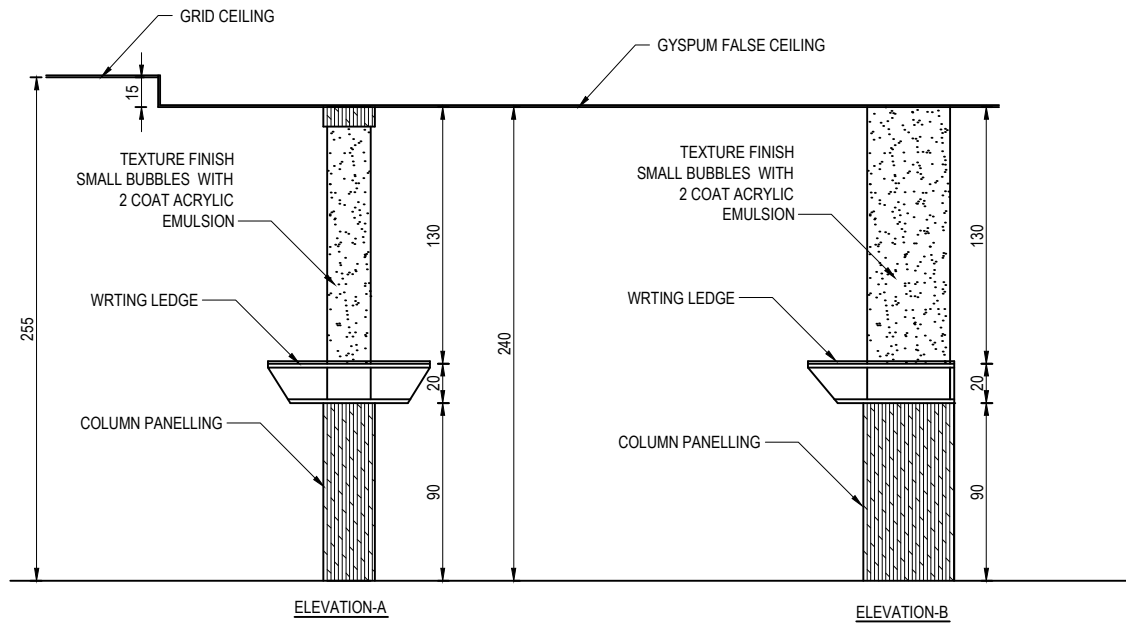
REV.

00

DRAWING NO.

EDCB/ALV/14-15/08

REV. DATE



ERNAKULAM DISTRICT CO-OPERATIVE
BANK EVENING BRANCH AT ALUVA

TYPICAL DETAIL DRAWING FOR
WRITING LEDGE, & COLUMN PANELLING

DRAWN BY : SANTHOSH

DATE : 21/01/2016

UNIT : CM (UNLESS IF SPECIFIED)

SCALE : NTS

CONSULTANT:

ENGINEERING SERVICE CO-OPERATIVE
SOCIETY, LTD., E-858, THEVARA

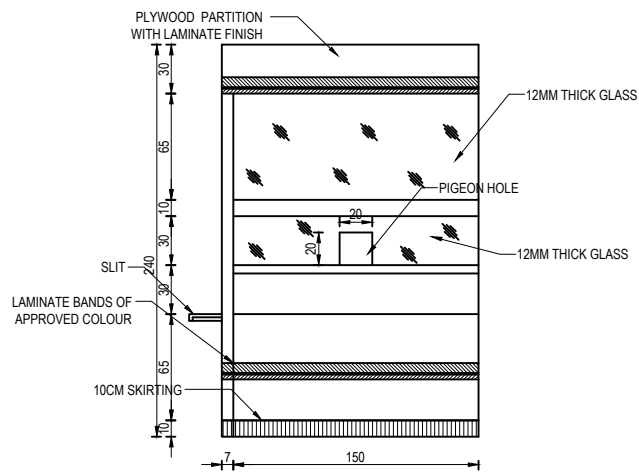
REV.

00

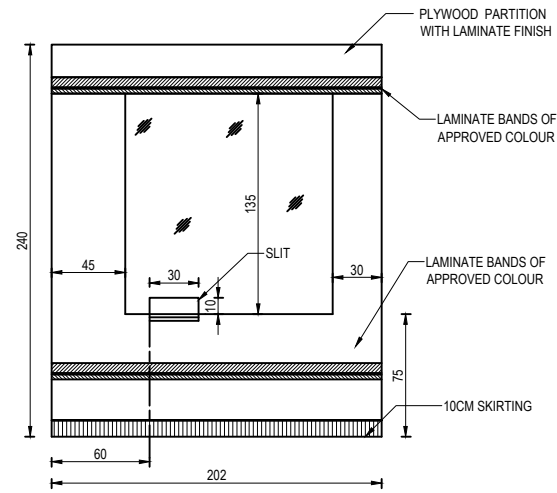
DRAWING NO.

EDCB/ALV/14-15/09

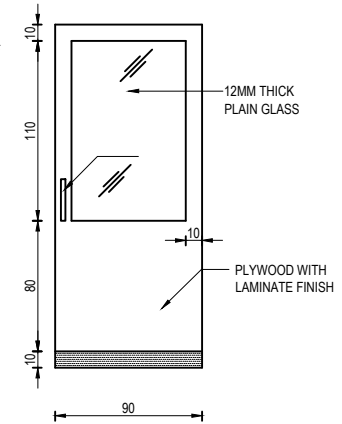
REV. DATE



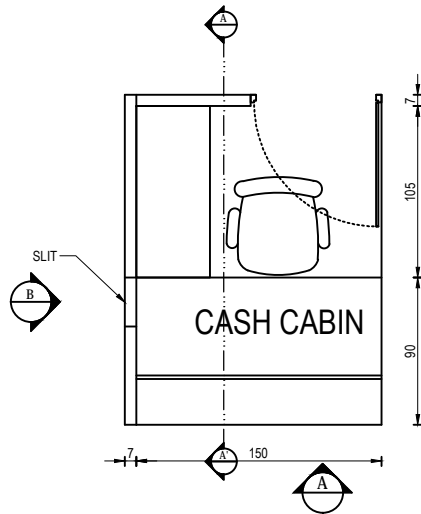
ELEVATION-A



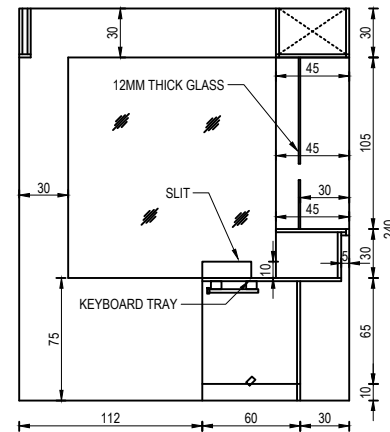
ELEVATION-B



DOOR DETAIL



TYPICAL PLAN



SECTION- A-A'

**ERNAKULAM DISTRICT CO-OPERATIVE BANK
EVENING BRANCH AT ALUVA**

TYPICAL CASH CABIN DETAIL

DRAWN BY : SANTHOSH
DATE : 05/01/2016

UNIT : CM (UNLESS IF SPECIFIED)
SCALE : NTS
CONSULTANT:
ENGINEERING SERVICE CO-OPERATIVE
SOCIETY, LTD., E-858, THEVARA

REV.	DRAWING NO.	REV. DATE
00	EDCB/CASH/14-15/12	
01	EDCB/CASH14-15/12/R1	01.02.2016